

DELATITE RIVER CATCHMENT LOCAL MANAGEMENT RULES



1. Catchment Information

The Delatite River flows into Lake Eildon just downstream of the Howqua Creek – Goughs Bay Rd and encompasses an area of approximately 407 km². The mean annual flow at the bottom of the Delatite River catchment is approximately 130,760 ML/yr. The Goulburn Broken Regional River Health Strategy lists the Delatite River as a high value asset as it contains Murray Cod, and is classified as being of high overall economic significance. Key issues identified are barriers to fish migration, bed instability, introduced flora, riparian vegetation quality, stock access, water quality and maintaining a healthy state.

The catchment is bound to the south by the Howqua River catchment and the north by the Broken River. Significant tributaries of Delatite River include Buttercup, Devils Plain, Timbertop, Home Station and Stony Creek. The main townships within the catchment are Merrijig, Sawmill Settlement, Delatite, and Mount Buller Alpine Township. The upper catchment is mainly forested, with upper mountains being a popular winter location for snow activities. The Delatite catchment is a popular holiday location during both the summer and winter.

2. Management of Licences

Restriction Triggers for each stage of restriction.

Restriction Stages	Trigger Values for Introduction of Next Stage of Restriction	Percent Restrictable Demand
Stage 5 (Suspension)	<=16 ML/day	100%

Note: Restrictions are implemented during dry periods prior to flows reducing to the trigger value. For example, if a river flow is reducing rapidly, a higher stage or suspension will be put in place before the trigger level is reached to provide for adequate flow for domestic and stock use and the environment.

3. Compliance Point

There is a surface water monitoring station located on Priries – Goughs Bay Rd downstream of the Mansfield – Woods Point Rd.

4. Licences

Licence Allocation in Delatite River and Tributaries

Licence Type	Number of Licences	Volume (ML)
Irrigation	85	741.3
Registered Dams	14	310
Total	99	1051.3

5. Additional Information

Stream codes and sustainable diversion limit zones are provided within this document for identification purposes when discussing the catchment diversion management with Goulburn-Murray Water Officers.

Stream Codes

Stream codes used in the management of the Delatite River and Tributaries:

4050124 4050187

Sustainable Diversion Limit zones

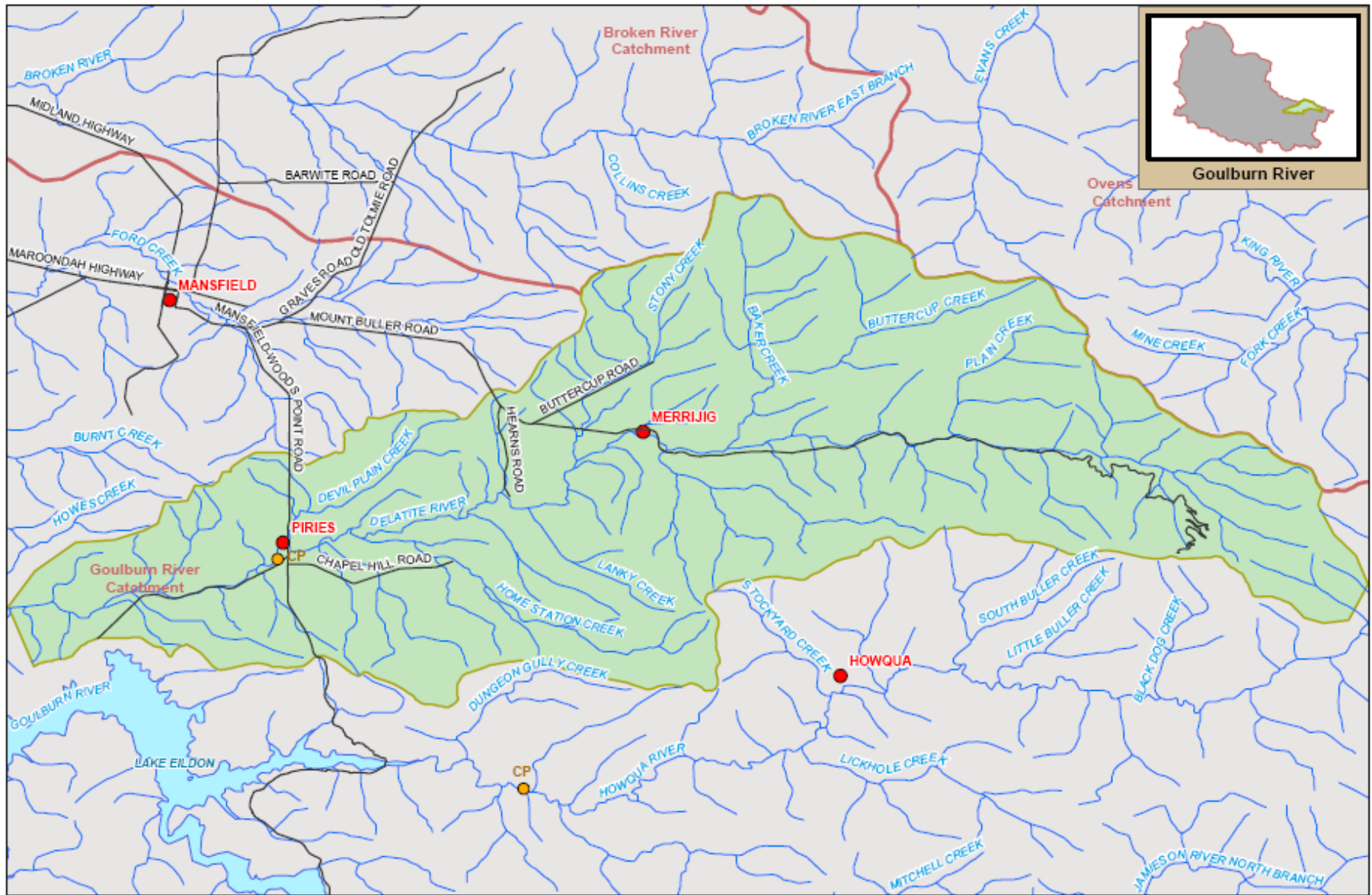
Sustainable Diversion Limit zones used in the management of surface water trade within the Delatite catchment:

4050402 4050401

For general information call or visit

1800 013 357

www.g-mwater.com.au



Goulburn River



TAT-AL08-0064
28 OCT 09

SCALE AT A4 1:190,000
0 1 2 3 4 5
km

DELATITE SUB CATCHMENT
Goulburn River Catchment

The content of this product is provided for information purposes only. No claim is made as to the accuracy or authenticity of the content of the product. In no event will GWRW, its agents, subcontractors and employees be liable for the accuracy of the information contained within this product nor its use or reliance placed on it. The information used within this product is provided on the basis that all persons accessing the information undertake responsibility for assessing the relevance and accuracy of its content.

