

UPPER GOULBURN RIVER CATCHMENT LOCAL MANAGEMENT RULES



1. Catchment Information

The Goulburn River flows into Lake Eildon near the township of Jamieson and encompasses an area of approximately 750 km². The mean annual flow at the bottom of the Upper Goulburn River catchment is approximately 357,000 ML/yr, which flows into the headwaters of Eildon. The Goulburn Broken Regional River Health Strategy lists the Goulburn River above Eildon as a high value asset as it is classed as an ecologically healthy river containing Macquarie Perch, Barred Galaxias, and the Spotted Tree Frog.

The catchment is bound to the west by the Big River catchment, the east by the Macalister River and the north by the Jamieson River catchment. Significant tributaries of the upper Goulburn include the Snake, Webber, Gaffneys, Moonlight, Edwards and Pheasant Creeks and the Black River. The main townships in the catchment include Kevington, Knockwood, and Woods Point. The catchment is predominantly a forested catchment with small pockets of cleared land around the townships within the valleys. Industry within the catchment includes mining, some dryland farming and tourism.

2. Management of Licences

Restriction Triggers for each stage of restriction.

Restriction Stages	Trigger Values for Introduction of Next Stage of Restriction	Percent Restrictable Demand
Stage 3 (Roster)	<15 ML/day	50%
Stage 5 (Suspension)	<=5 ML/day	100%

Note: Restrictions are implemented during dry periods prior to flows reducing to the trigger value. For example, if a river flow is reducing rapidly, a higher stage or suspension will be put in place before the trigger level is reached to provide for adequate flow for domestic and stock use and the environment.

3. Compliance Point

There is a surface water monitoring station located upstream of Jamieson on the Mansfield-Woods Point Road. The site is called the Goulburn River @ Dohertys.

4. Licences

Licence Allocation in the Upper Goulburn River and Tributaries

Licence Type	Number of Licences	Volume (ML)
Irrigation	59	130
Total	59	130

5. Additional Information

Stream codes and sustainable diversion limit zones are provided within this document for identification purposes when discussing the catchment diversion management with Goulburn-Murray Water Officers.

Stream Codes

Stream codes used in the management of the Upper Goulburn and Tributaries:
4050100

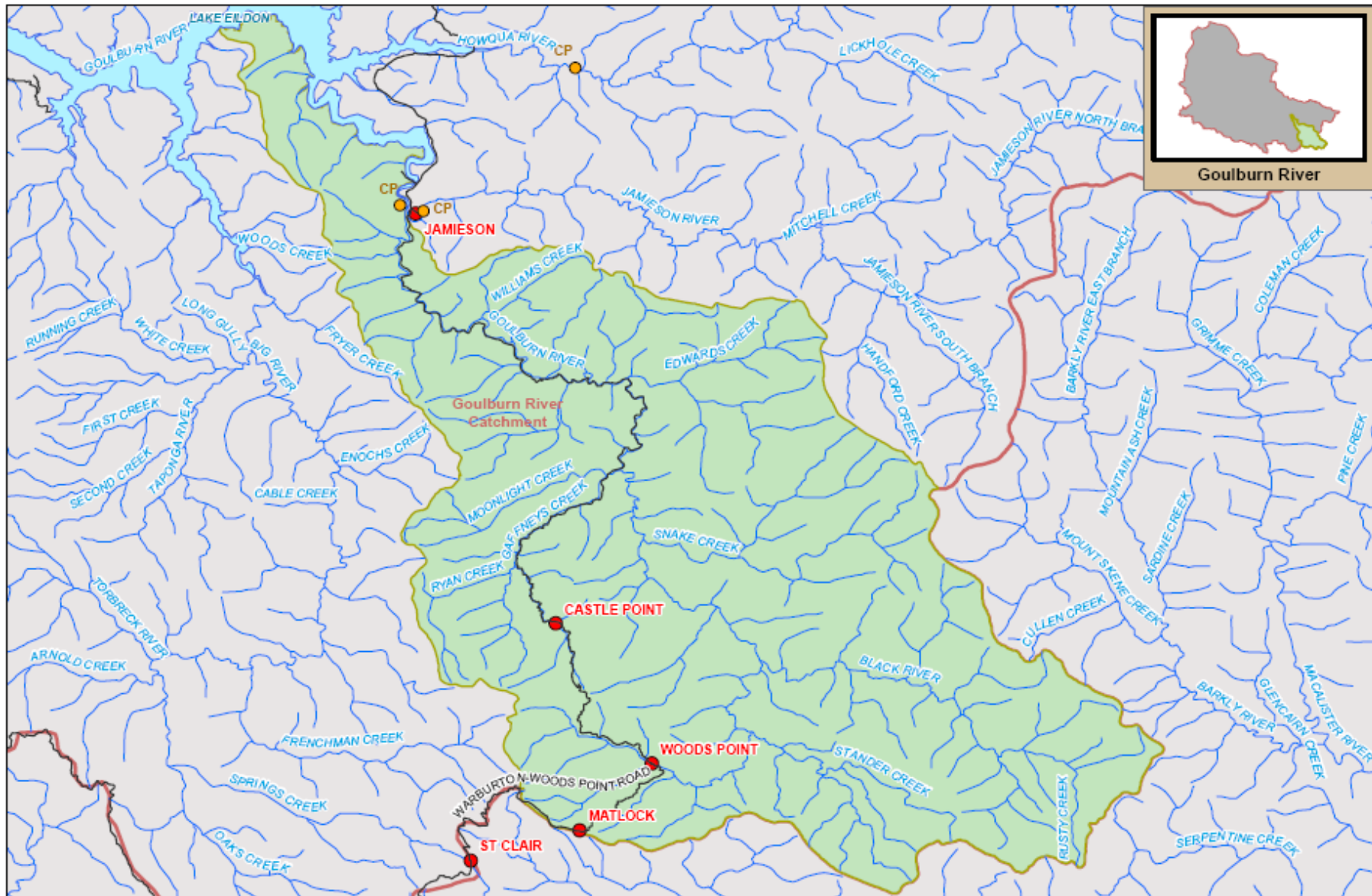
Sustainable Diversion Limit zones

Sustainable Diversion Limit zones used in the management of surface water trade within the Upper Goulburn catchment:
4050001 4050002 4050003

For general information call or visit

1800 013 357

www.g-mwater.com.au



Goulburn River



TAT-AL09-0064
28 OCT 09

SCALE AT A4 1:250,000
0 1 2 3 4 5
km

UPPER GOULBURN SUB CATCHMENT
Goulburn River Catchment

The content of this product is provided for information purposes only. No claim is made as to the accuracy or authenticity of the content of the product, or its use or misuse. All agents, intermediaries and employees be liable for the accuracy of the information contained within this product for its use or reliance placed on it. The information stated within this product is provided on the basis that all persons accessing the information undertake responsibility for assessing the relevance and accuracy of its content.

